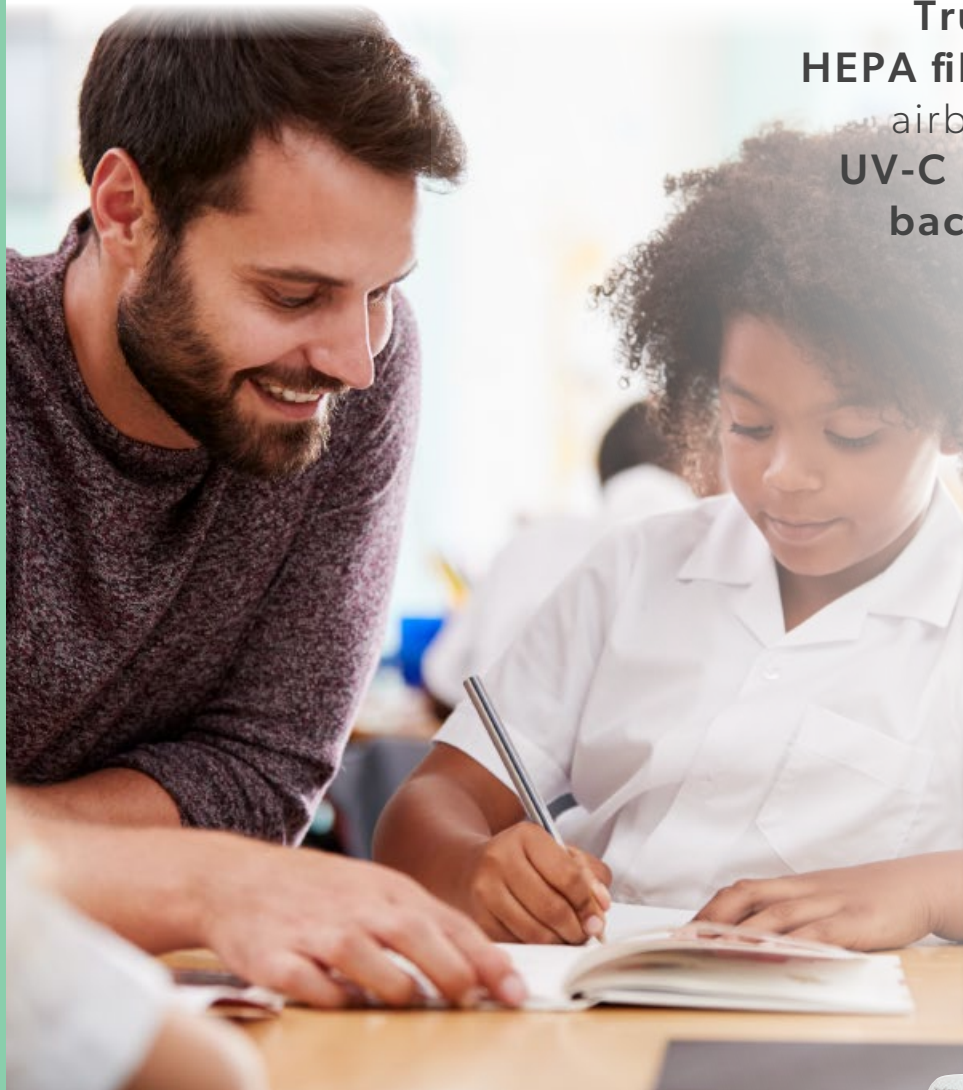


TruSens™





Give your students and teachers peace of mind with cleaner air.

TruSens™ Air Purifiers use **HEPA filtration** to capture indoor airborne pollutants whilst our **UV-C lamp reduces germs and bacteria** trapped in the filter.

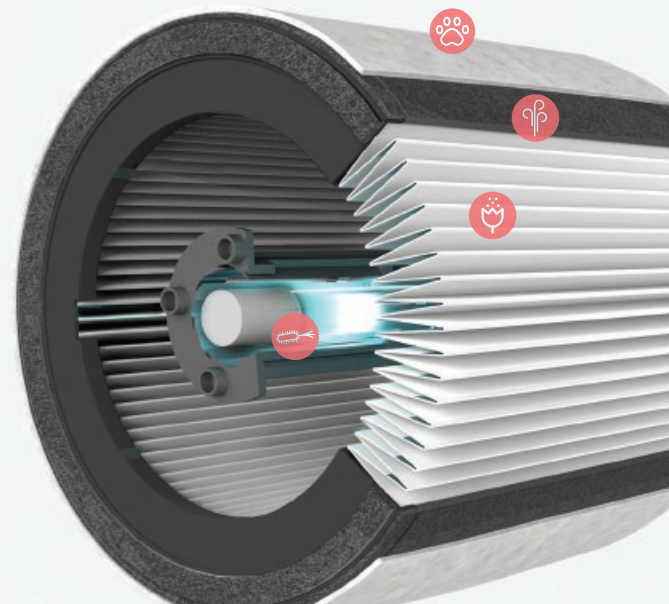


Z-3000AU

TruSens™ Combination Filter Includes:

-  **Washable Pre-Filter***: captures large particles such as dust and pet hair.
-  **Activated Carbon Filter**: removes certain gases and odours from the air.
-  **HEPA Filter**: captures particulate matter down to 0.3 microns.
-  **UV-C Light**: emits light that reduces growth of germs and bacteria that can get trapped in the filter.**

*In the Z-2000 and Z-3000 air purifiers only.
** In laboratory testing, UV lamp reduces Staphylococcus aureus and Pseudomonas aeruginosa.



TruSens™

TruSens™

EXPERIENCE THE DIFFERENCE
air purifiers reimagined



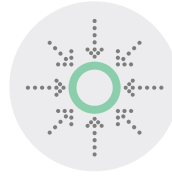
Improved Air Coverage

The separate SensorPod™ air quality monitor* detects pollutants from across the room, not just by the purifier. TruSens™ automatically adjusts its fan speed, delivering cleaner air throughout your space.



Air on Display

View indoor air quality readings with the illuminated LED display* on the air purifier.



More Ways to Purify

The 360° filter captures allergens, certain VOCs, and microscopic particles from all directions, while a UV-C light reduces germs and bacteria trapped in the filter.



Reduces Airborne Virus Exposure

TruSens™ eliminates 99.99% of airborne coronavirus (SARS-CoV-2) in your indoor space.**



| Air Purifier Model | Z1000AU | Z2000AU | Z3000AU |
|--|---------|---------|---------|
| Room Coverage | 23 sqm | 35 sqm | 70 sqm |
| Remote SensorPod™ | – | • | • |
| Air Quality Indicator | – | • | • |
| PureDirect™ Technology | • | • | • |
| Filters Included: | | | |
| Pre-Filter (washable with water) | – | • | • |
| Carbon Filter | • | • | • |
| HEPA Filter | • | • | • |
| UV-C Light | • | • | • |
| Specialty Filters Available for Purchase: | | | |
| Allergy & Flu HEPA and Carbon Filter | • | • | • |
| Odour & VOC HEPA and Carbon Filter | • | • | • |
| Pet HEPA and Carbon Filter | • | • | • |

*LED display and SensorPod™ air quality monitor not available on the Z1000AU unit.

**Results from independent third-party testing using aerosolised airborne concentration of human coronavirus 229E over a two-hour period in a sealed 30m³ test chamber. HCoV-229E is a well-established surrogate for SARS-CoV-2 (the virus that causes COVID-19).